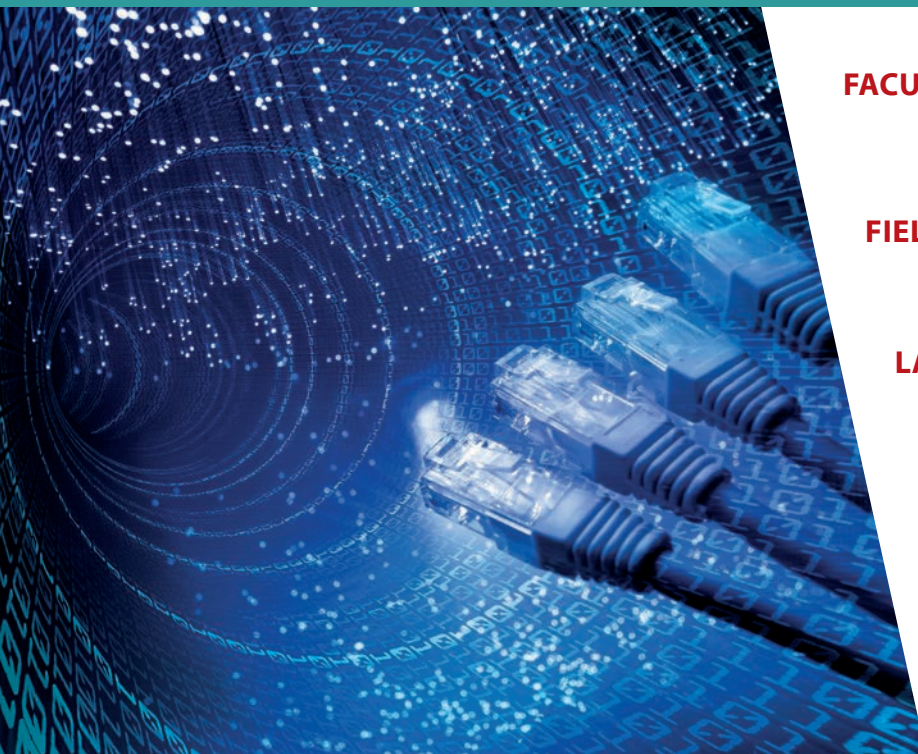
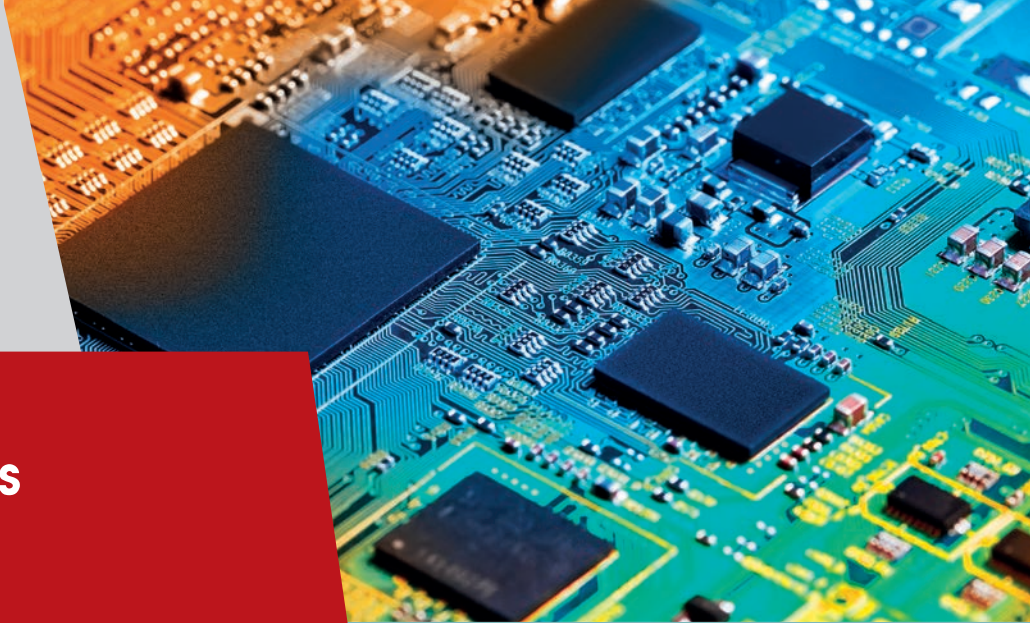


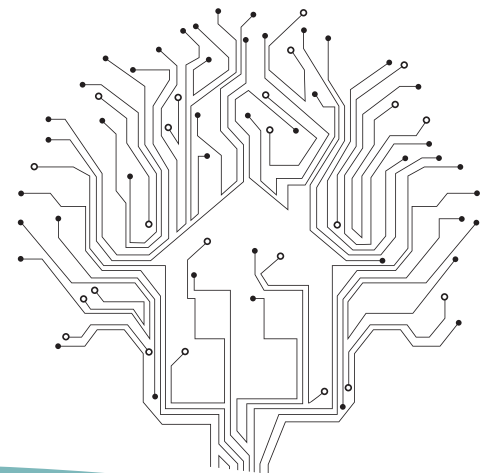
# Applied Electronics



|                       |  |
|-----------------------|--|
| <b>FACULTY</b>        | <i>Faculty of Electronics,<br/>Telecommunications and<br/>Information Technology</i>   |
| <b>FIELD OF STUDY</b> | <i>Electronic engineering,<br/>telecommunications and<br/>information technologies</i> |
| <b>LANGUAGE</b>       | <i>English</i>   |
| <b>DEGREE AWARDED</b> | <i>Bachelor of Science<br/>(BSc)</i>   |
| <b>DURATION</b>       | <i>8 semesters/4 years</i>   |
| <b>CREDIT POINTS</b>  | <i>240 ECTS</i>  |

## OBJECTIVES

- Learning ability.
- Ability to understand technological solutions for electronics and making decisions based on logic and critical thinking.
- Ability to understand technical requirements and solutions proposals in electronics.
- The ability of working in a team and interact with specialists from other domains.



## GRADUATES

Analysis and testing of analog and digital electronic systems; Signal analysis and processing (data, text, voice, images). Usage of specific technologies for electronic equipment fabrication. Design knowledge at chip, board, system levels. Functional principles usage for the electronic system control in telecommunications, automation, medicine, automotive, power systems. Use of information technology in electronics. Use of CAD/CAM/CAE tools in design activities. Implementation of hardware systems with microprocessors, microcontrollers and signal processors.

Assembly, high level and object oriented programming.

## MAIN TEACHING AREAS

Computer Programming – Languages and Algorithms, Applied Informatics, Electronics, Microwaves, Microprocessors, Microcontrollers, Theory of Information and Coding, Power Electronics, Switch Mode Power supplies, Radio Communications, Television, Control, FPGA circuit, Analysis and Synthesis of circuits, Computer Aid Design, Materials of Electronics, Sensors and Transducers, Virtual Instrumentation, Microelectronics

## ADMISSION REQUIREMENTS AND PROCESS, TUITION FEES

Check the information posted on the International Relations Office:  
[http://bri.utcluj.ro/RI2\\_en/admitere\\_eu\\_neu.php](http://bri.utcluj.ro/RI2_en/admitere_eu_neu.php)  
Program administrative costs:  
[http://bri.utcluj.ro/RI2\\_en/fees.php](http://bri.utcluj.ro/RI2_en/fees.php)

## INDUSTRIAL / ACADEMIC PARTNERS

Telekom România Communications SA, Net Brinel Cluj-Napoca, Orange România SA, Vodafone România SA, Frequentis România SRL, NTT Data România SA, Emerson SRL, Samsung Electronics Co LTD, Nokia România SRL, Cisco SRL, Huawei Technologies SRL, Betfair Romania Development SRL, Siemens SRL, Robert Bosch SRL, Rohde & Schwarz România SRL

## JOB OPENINGS

Embedded Systems Engineer, Software engineer, Hardware engineer

## CONTACT

Faculty of Electronics, Telecommunications and Information Technology /  
Applied Electronics Department,  
Professor Dorin Petreus, Ph.D., +40-264-401225,

Dorin.Petreus@ael.utcluj.ro,  
Technical University of Cluj-Napoca  
Strada George Baritiu 26-28, Room E06, 400027  
Cluj-Napoca, Romania.